

AURORA KNIT'S BLANKETS



WHEN THE WIND
BLOWS

MATERIALS:

DK WEIGHT YARN (ALTHOUGH OTHER YARN CAN BE USED AS PATTERN IS WRITTEN BY STITCH AND ROW.)

SEE NOTES ON SIZING FOR YARDAGE SIZING AND YARN IDEAS.

3.75MM NEEDLES

YARN NEEDLE.

TENSION; 20ST X30 ROWS, MEASURED ACROSS WHOLE BLANKET

ABBREVIATIONS AT END OF PATTERN.

L TO R ON TOP PICTURES:

EMMA'S, MELANIE'S, MAX'S, WILLEM'S BLANKETS



'When the Wind Blows' ebook came about as I noticed that a large number of people were using my blanket patterns for charity blanket knitting. When I looked into it I found that lots of hospitals and charities have specific blanket sizes they would like. This is often difficult to achieve with set blanket sizes. This gave me the idea to design blankets with small, but interesting, stitch repeats that can be added to, to create blankets of nearly any size.

The Yarn Dispensary in Faversham was nice enough to let me launch this ebook at their 'World Wide Knit in Public Day' on 10th June 2017

<http://theyarndispensary.co.uk/>

Sizing:

Width: Sizing starts at 30cm and is increased in increments of 5cm with each pattern repeat..

Length: Length of blanket starts at 35cm and each row repeat adds 3.3 cm to the size of the blanket..

Yardage: Obviously the yardage for these blankets is very flexible however, please refer to the sizing chart for yardage for main sizes.

Size	Stitches	Stitch repeats	Rows	Row Repeats	Width(cm)	Length (cm)	Yardage (m)
1	58	5	116	10	29	39	140
2	68	6	136	12	34	45	200
3	78	7	156	14	39	52	260
4	88	8	176	16	44	59	330
5	98	9	196	18	49	65	410
6	108	10	216	20	54	72	500
7	118	11	236	22	59	79	600
8	130	12	260	24	65	87	725
9	140	13	280	26	70	93	840
10	150	14	300	28	75	100	965
11	160	15	320	30	80	107	1100
12	170	16	340	32	85	113	1240
13	180	17	360	34	90	120	1390
14	194	18	388	36	97	129	1600
15	204	19	408	38	102	136	1785

This chart gives approximate sizes and yardage and is overall based on **Willem's Blanket**.

Stitches include edge stitches and stitch repeats

Rows include edging rows and row repeats

Please refer to specific blanket instructions for actual cast on etc. as they may vary by up to 3 st

Yarn Suggestions:

Yarn used in samples: **Emma:** Sirdar Baby Bamboo. (95m) **Max:** Baby Cashmerino Tonals (125m). **Melanie:** Rialto DK, (105m)
Willem: Sublime Extrafine Merino DK (116m) (per skein)

Other suggestions: CoopKnits Yeah Socks DK (112m)

Luxury Suggestions: Fiberspates Vivacious DK (230m), Sublime Cashmere Merino Silk (116m)



Emma's Blanket

Bottom Edging:

Cast on:

61/71/81/91/101/111/121/133/143/153/1
63/173/183/197/207 sts

R1-8/8/8/8/8/8/8/8/

10/10/10/10/10/10/14/14: s1wyib, K to end

Main Blanket Pattern.

R1: s1wyib,

K3/3/3/3/3/3/4/4/4/4/4/4/6/6, PM, (K5,
P3, K2)

x5/6/7/8/9/10/11/12/13/14/15/16/17/18/
19, K3, PM,
K4/4/4/4/4/4/5/5/5/5/5/5/7/7

R2:s1wyib,

K3/3/3/3/3/3/4/4/4/4/4/4/6/6, SM, P3
(P2, K3, P5)

x5/6/7/8/9/10/11/12/13/14/15/16/17/18/
19, SM, K4/4/4/4/4/4/5/5/5/5/5/5/7/7

Continue the edging before and after the
markers as set. The rest of the rows will give
instructions for in-between markers.

R3: (K5, P3, K2)

x5/6/7/8/9/10/11/12/13/14/15/16/17/18/19,
K3,

R4: P3, (P1, K1, P3, K1, P4)

x5/6/7/8/9/10/11/12/13/14/15/16/17/18/19

R5: (K3, P1, K5, P1)

x5/6/7/8/9/10/11/12/13/14/15/16/17/18/19,
K3

R6: K3, (P7, K3)

x5/6/7/8/9/10/11/12/13/14/15/16/17/18/19

R7: (P3, K7)

x5/6/7/8/9/10/11/12/13/14/15/16/17/18/19,
P3

R8: K3, (P7, K3)

x5/6/7/8/9/10/11/12/13/14/15/16/17/18/19,

R9: (K3, P1, K5, P1)

x5/6/7/8/9/10/11/12/13/14/15/16/17/18/19, K
3

R10: P3, (P1, K1, P3, K1, P4)

x5/6/7/8/9/10/11/12/13/14/15/16/17/18/19,

Repeat R1-10 a further

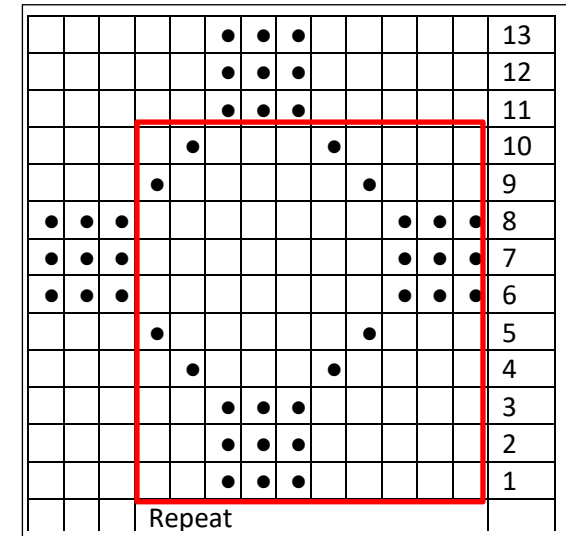
10/12/14/16/18/20/22/24/26/28/30/32/34/36
/38 times

Followed by R1-3. (Finishing on a ws)

Top Edging:

R1-7/7/7/7/7/7/9/9/9/9/9/9/13/13: s1wyib, K to
end, removing markers as you come to them.

Cast off loosely. Block, weave in ends.



Max's Blanket

Bottom Edging:

Cast on:

59/69/79/89/99/109/119/131/141/151/161/171/181/195/205 sts

R1-8/8/8/8/8/8/8/8/

10/10/10/10/10/10/14/14: s1wyib, K to end

Main Blanket Pattern.

R1: s1wyib,

K3/3/3/3/3/3/4/4/4/4/4/4/6/6, PM, (K5, P1, K4)

x5/6/7/8/9/10/11/12/13/14/15/16/17/18/19, K1, PM,

K4/4/4/4/4/4/5/5/5/5/5/5/7/7

R2:s1wyib,

K3/3/3/3/3/3/4/4/4/4/4/4/6/6, SM, P1 (P3, K3, P4)

x5/6/7/8/9/10/11/12/13/14/15/16/17/18/19, SM, K4/4/4/4/4/4/5/5/5/5/5/5/7/7

Continue the edging before and after the markers as set. The rest of the rows will give instructions for in-between markers.

R3: (K3, P2, K1, P2, K2)

x5/6/7/8/9/10/11/12/13/14/15/16/17/18/19, K1,

R4: P1, (P1, K2, P3, K2, P2)

x5/6/7/8/9/10/11/12/13/14/15/16/17/18/19

R5: (K1, P2, K5, P2)

X5/6/7/8/9/10/11/12/13/14/15/16/17/18/19, K1

R6: K1 (K1, P7, K2)

x5/6/7/8/9/10/11/12/13/14/15/16/17/18/19

R7: As R5

R8: As R4

R9: As R3

R10: As R2

Repeat R1-10 a further

10/12/14/16/18/20/22/24/26/28/30/32/34/36/38 times

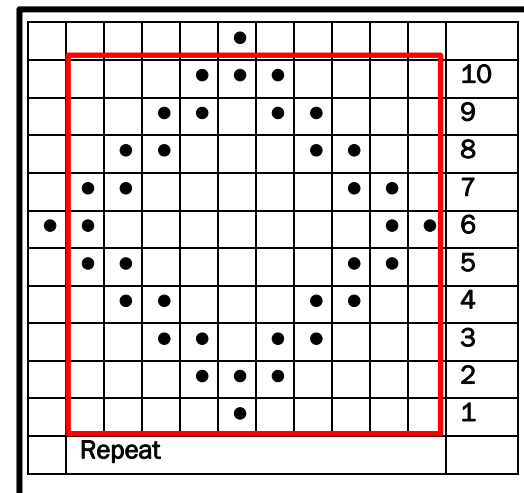
Followed by a R1. (Finishing on a ws)

Top Edging:

R1-7/7/7/7/7/7/9/9/9/9/9/9/13/13: s1wyib, K to end, removing markers as you come to them.

Cast off loosely.

Block, weave in ends.



Willem's Blanket

Bottom Edging:

Cast on:

58/68/78/88/98/108/118/130/140/150/160/170/180/194/204

R1-8/8/8/8/8/8/8/

10/10/10/10/10/10/14/14: s1wyib, K to end

Main Blanket Pattern.

R1: s1wyib,

K3/3/3/3/3/3/4/4/4/4/4/4/6/6, PM, (K4, [P1, K1] X3)

x5/6/7/8/9/10/11/12/13/14/15/16/17/18/19, PM, K4/4/4/4/4/4/5/5/5/5/5/7/7

R2:s1wyib,

K3/3/3/3/3/3/4/4/4/4/4/4/6/6, SM, (P2, [K1, P1] X3, P2)

x5/6/7/8/9/10/11/12/13/14/15/16/17/18/19, SM, K4/4/4/4/4/4/5/5/5/5/5/7/7

Continue the edging before and after the markers as set. The rest of the rows will give instructions for in-between markers.

R3: (K2, [P1, K1] X3, K2)

x5/6/7/8/9/10/11/12/13/14/15/16/17/18/19,

R4: (P4, [K1, P1] X3)

x5/6/7/8/9/10/11/12/13/14/15/16/17/18/19

R5: ([P1, K1] X3, K4)

X5/6/7/8/9/10/11/12/13/14/15/16/17/18/19

R6: (P4, K5, P1)

x5/6/7/8/9/10/11/12/13/14/15/16/17/18/19

R7: (K2, P5, K3)

x5/6/7/8/9/10/11/12/13/14/15/16/17/18/19

R8: (P2, K5, P3)

x5/6/7/8/9/10/11/12/13/14/15/16/17/18/19

R9: (K4, P5, K1)

x5/6/7/8/9/10/11/12/13/14/15/16/17/18/19

R10: (K5, P5)

x5/6/7/8/9/10/11/12/13/14/15/16/17/18/19

Repeat R1-10 a further

10/12/14/16/18/20/22/24/26/28/30/32/34/36/38 times

Top Edging:

R1-8/8/8/8/8/8/8/10/10/10/10/10/14/14:

s1wyib, K to end, removing markers as you come to them.

Cast off loosely.

Block, weave in ends.

•	•	•	•	•									10
	•	•	•	•	•								9
		•	•	•	•	•							8
			•	•	•	•	•						7
				•	•	•	•	•					6
					•		•		•			•	5
				•		•			•				4
			•		•		•						3
		•		•		•							2
	•		•		•								1



CHARTS

ALL RS (ODD) ROWS READ FROM RIGHT TO LEFT.

ALL WS (EVEN) ROWS READ FROM LEFT TO RIGHT.

•	K1 ON WS, P1 ON RS
	P1 ON WS, K1 ON RS

RED LINES DENOTES REPEAT SECTION

ABBREVIATIONS:

S1 WYIB: SLIP ONE STITCH PURL WISE WITH
YARN HELD IN BACK.

ST; STITCHES;

R; ROW

PM; PLACE MARKER.

SM: SLIP MARKER

CO: CAST ON

RS: RIGHT SIDE

WS: WRONG SIDE

