



From Patons Archive
1940s

PATONS TOTEM
MERINO 8 ply

Grown & made in Australia

celebrating
100
YEARS
trusted since 1923

 **Patons**

Lennox V-Neck Cardigan

Lennox V-Neck Cardigan

Intermediate Knitting

MEASUREMENTS

	S	M	L	XL	XXL
To Fit Chest	cm 95	105	115	125	135
Actual Size	cm 100	110	120	130	140
Length (approx)	cm 67	68	69	70	71
Sleeve Length	cm 51	51	51	51	51

PATONS TOTEM MERINO 8 PLY 50g balls

Quantity (4441 Hazlemere)	18	20	22	24	27
------------------------------	----	----	----	----	----

NOTE – If sleeve length is altered, yarn quantity may need to be adjusted.

Use only the yarn specified. Other yarns are likely to produce different results. Quantities are approximate as they can vary between knitters. Ensure all yarn is from the same dye lot.

NEEDLES AND EXTRAS

- 1 pair each 3.25mm (UK 10) and 4.5mm (UK 7) knitting needles or size needed to give correct tension.
- wool needle for sewing seams.
- 8 buttons.

TENSION

21 sts and 28 rows to 10cm over stocking st, using 4.5mm needles.

To work a tension square, using 4.5mm needles, cast on 30 sts.

Work 42 rows stocking st. Cast off loosely.

Check your tension carefully.

If fewer sts to 10cm use smaller needles, if more sts use larger needles.

NOTE – Cardigan is worked on larger needles than usually recommended for this yarn.

SPECIAL ABBREVIATION

M1 = Make 1 stitch increase – with left-hand needle, pick up loop which lies before next st from the front then knit into back of this loop.

BACK

Using 3.25mm needles, cast on **130** (142-**154**-166-**178**) sts.

BEG RIB –

1st row – K2, * P1, K1, rep from * to end.

Rep last row 40 times.

42nd row – K2, * P1, K1, rep from * to last 2 sts, K2tog ... **129** (141-**153**-165-**177**) sts.

Change to 4.5mm needles.

BEG PATT –

1st row – K1, * P1, K1, rep from * to end.

2nd row – P1, K1, P1, * K3, P1, rep from * to last 2 sts, K1, P1.

3rd row – K1, P1, K1, * P3, K1, rep from * to last 2 sts, P1, K1.

4th row – P1, * K3, P1, rep from * to end.

Last 4 rows form patt for Back.

Work a further 86 rows.

SHAPE ARMHOLES –

Keeping patt correct, cast off **8** (10-**11**-13-**15**) sts at beg of next 2 rows ... **113** (121-**131**-139-**147**) sts.

Dec one st at each end of next row, then in every foll alt row until **97** (101-**107**-111-**117**) sts rem.

Work **47** (47-**45**-45-**45**) rows.

BEG SHORT ROWS TO SHAPE SHOULDERS –

NOTE – When working short row shaping and pattern specifies **turn**, proceed as folls to avoid holes in your work –

Take yarn under needle and onto other side of work, slip next st onto right-hand needle, take yarn back to original position, slip st back onto left-hand needle, then turn and proceed as instructed in pattern.

1st and 2nd rows – Patt to last **8** (8-**9**-9-**10**) sts, **turn**.

3rd and 4th rows – Patt to last **16** (16-**18**-18-**20**) sts, **turn**.

5th and 6th rows – Patt to last **24** (24-**27**-27-**30**) sts, **turn**.

7th row – Patt to end.

Cast off loosely.

LEFT FRONT

Using 3.25mm needles, cast on **72** (76-**84**-88-**96**) sts.

BEG RIB –

1st row – K1, * P1, K1, rep from * to last st, K1.

Rep last row 3 times.

5th row – * K1, P1, rep from * to last 6 sts, K2tog, yfwd, K1, P1, K2 ... buttonhole.

Work 11 rows rib.

Rep 5th row once.

Rep last 12 rows twice.

42nd row – * K1, P1, rep from * to last 2 sts, K2tog ... **71** (75-**83**-87-**95**) sts and 4 buttonholes.

Change to 4.5mm needles.

BEG PATT –

1st row – K2, * P1, K1, rep from * to last st, K1.

2nd row – (K1, P1) 4 times, * K3, P1, rep from * to last 3 sts, K2, P1.

3rd row – K1, P2, * K1, P3, rep from * to last 8 sts, (K1, P1) 3 times, K2.

4th row – (K1, P1) 5 times, * K3, P1, rep from * to last st, P1.

Last 4 rows form patt for Left Front.

Work a further 86 rows, working a buttonhole (as before) in every 24th row from previous buttonhole ... 7 buttonholes.

SHAPE ARMHOLE –

Keeping patt correct, cast off **8** (10-**11**-13-**15**) sts at beg of next row ... **63** (65-**72**-74-**80**) sts.

Dec one st at beg of every foll alt row 3 times, working buttonhole (as before) in 4th row ... **60** (62-**69**-71-**77**) sts and 8 buttonholes in total.

Work 1 row.

SHAPE FRONT SLOPE –

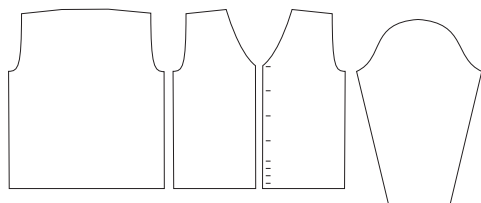
1st row – Patt 2tog, patt to last 10 sts, patt 2tog, (K1, P1) 3 times, K2 ... **58** (60-**67**-69-**75**) sts.

Work 1 row.

Rep last 2 rows **3** (5-**7**-9-**10**) times, then 1st row once ... **50** (48-**51**-49-**53**) sts.

Dec one st (inside 8 sts of band, as before) at front edge in every foll alt row **11** (0-**2**-0-**2**) times, then in every foll 4th row **6** (11-**10**-10-**10**) times ... **33** (37-**39**-39-**41**) sts.

Work **2** (4-**2**-6-**2**) rows.



CONTACT US

4 Lansell Street, Bendigo, VIC 3550

T +61 3 5442 4673

E enquiries@ausyarnco.com.au

A.B.N 43 006 285 169

patonsyarns.com.au /ausyarnco @ausyarnco

• We have made every effort to ensure that these instructions are accurate and complete.
• We cannot be responsible for variations in individual work, human error or if yarn other than the recommended Patons yarn is used.
• This publication is protected by copyright. Patons Totem Merino 8 ply is a trade mark of The Australian Yarn Company. Yarn colours shown may vary on screen or when printing this document.

BEG SHORT ROWS TO SHAPE SHOULDER –
1st row (wrong side) – Patt to last **8** (8-9-9-10) sts, **turn**.

2nd and foll alt rows – Patt to end.

3rd row – Patt to last **16** (16-18-18-20) sts, **turn**.

5th row – Patt to last **24** (24-27-27-30) sts, **turn**.

6th row – Patt to end.

Work 1 row.

BEG NECKBAND –

Cast off **25** (29-31-31-33) sts at beg of next row, patt to end ... 8 sts.

Work a further **15** (15-17-17-19) rows rib.

Cast off loosely in rib.

RIGHT FRONT

Using 3.25mm needles, cast on **72** (76-84-88-96) sts.

1st row – K2, * P1, K1, rep from * to end.

Rep last row 40 times.

42nd row – K2tog, * P1, K1, rep from * to end ... **71** (75-83-87-95) sts.

Change to 4.5mm needles.

BEG PATT –

1st row – K2, * P1, K1, rep from * to last st, K1.

2nd row – P1, K2, * P1, K3, rep from * to last 8 sts, (P1, K1) 4 times.

3rd row – K2, (P1, K1) 3 times, * P3, K1, rep from * to last 3 sts, P2, K1.

4th row – P2, * K3, P1, rep from * to last 9 sts, K1, (P1, K1) 4 times.

Last 4 rows form patt for Right Front.

Work a further 87 rows.

SHAPE ARMHOLE –

Keeping patt correct, cast off **8** (10-11-13-15) sts at beg of next row ... **63** (65-72-74-80) sts.

Dec one st at armhole edge in next row then in every foll alt row twice ... **60** (62-69-71-77) sts.

Work 1 row.

SHAPE FRONT SLOPE –

1st row – K2, (P1, K1) 3 times, patt 2tog, patt to last 2 sts, patt 2tog ... **58** (60-67-69-75) sts.

Work 1 row.

Rep last 2 rows **3** (5-7-9-10) times, then 1st row once ... **50** (48-51-49-53) sts.

Dec one st (inside 8 sts of band, as before) at front edge in every foll alt row **11** (0-2-0-2) times, then in every foll 4th row **6** (11-10-10-10) times ... **33** (37-39-39-41) sts.

Work **1** (3-1-5-1) rows.

BEG SHORT ROWS TO SHAPE SHOULDER –

1st row – Patt to last **8** (8-9-9-10) sts, **turn**.

2nd and foll alt rows – Patt to end.

3rd row – Patt to last **16** (16-18-18-20) sts, **turn**.

5th row – Patt to last **24** (24-27-27-30) sts, **turn**.

6th row – Patt to end.

Work 1 row.

BEG NECKBAND –

Cast off **25** (29-31-31-33) sts at beg of next row, patt to end ... 8 sts.

Work a further **14** (14-16-16-18) rows rib.

Cast off loosely in rib.

SLEEVES

Using 3.25mm needles, cast on **50** (50-54-54-58) sts.

1st row – K2, * P1, K1, rep from * to end.

Rep last row 34 times.

36th row – K1, **M1**, K1, * P1, K1, rep from * to end ... **51** (51-55-55-59) sts.

Change to 4.5mm needles.

BEG PATT –

1st row – K2, * P1, K1, rep from * to last st, K1.

2nd row – K1, P1, * K3, P1, rep from * to last st, K1.

3rd row – K2, * P3, K1, rep from * to last st, K1.

4th row – K3, * P1, K3, rep from * to end.

Last 4 rows place patt for Sleeves.

Next row – K2, **M1**, * P1, K1, rep from * to last 3 sts, P1, **M1**, K2 ... **53** (53-57-57-61) sts.

Keeping patt correct and working extra sts into patt, inc one st (as before) at each end of every foll **4th** (4th-**2nd**-2nd-**2nd**) row until there are **83** (101-**63**-75-**83**) sts, then in every foll **6th** (6th-**4th**-4th-**4th**) row until there are **97** (103-**111**-117-**123**) sts.

Cont without further shaping until Sleeve measures 51cm (or length desired) from beg, working last row on wrong side.

SHAPE TOP –

Keeping patt correct, cast off **4** (5-6-7-8) sts at beg of next 2 rows ... **89** (93-99-103-107) sts.

Dec one st at each end of next row, then in every foll alt row until **67** (71-79-79-83) sts rem, then in every row until **21** (21-23-25-25) sts rem.

Cast off loosely.

TO MAKE UP

NOTE – Cuffs may be sewn using a Flat seam enabling them to be turned back if desired.

Using Mattress stitch, join shoulder, side and sleeve seams. Placing centre of sleeve top to shoulder seam, sew in sleeves evenly. Using a Flat seam, join cast-off ends of neckbands then join side edge to back neck. Sew on buttons.

CONTACT US

4 Lansell Street, Bendigo, VIC 3550

T +61 3 5442 4673

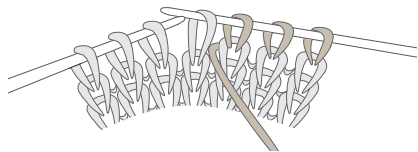
E enquiries@ausyarnco.com.au

A.B.N 43 006 285 169

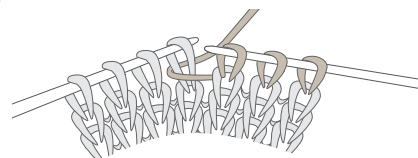
patonsyarns.com.au  /ausyarnco  @ausyarnco

TURNING AND WORKING SHORT ROWS

Turning part way through a row is used to make one side of the work longer than the other, e.g. the slope of a shoulder.



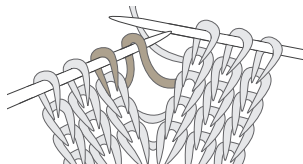
Slip the next stitch from the left-hand needle to the right-hand needle (this is the first stitch not being worked). Take the yarn back to its original position.



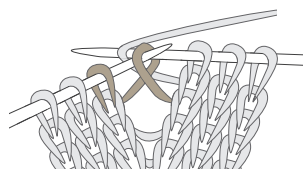
Slip the stitch back onto the left-hand needle. The unworked stitch now has the yarn wrapped around it – this is what prevents a hole.

Turn the work and continue with next row as instructed.

M1 – MAKE 1 STITCH INCREASE

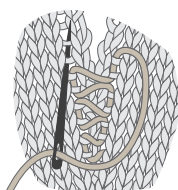


To make an extra stitch, with left-hand needle, pick up loop which lies before next stitch (from the front).



Knit into back of this loop. This will twist the loop and prevent a hole from appearing in your work.

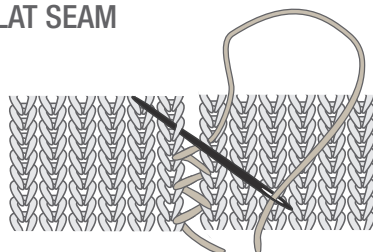
MATTRESS STITCH SEAM



With right sides of knitting facing up and pieces side by side, insert wool needle from wrong side, between edge stitch and next stitch in first row. Insert needle from right side between same stitches on other piece then pass needle under 2 rows bringing it up to front again. Insert wool needle down in same space that last stitch on first piece came out of, pass needle under 2 rows bringing it up to front as before.

Swap from side to side always placing needle in same space that the last stitch came out of. Do not pull too tightly – the seam should be as elastic as the fabric it joins.

FLAT SEAM



A flat seam may be worked from either the right or the wrong side of the work. Place the 2 pieces of fabric together and stitch alternate rows, always bringing the needle up from underneath through the centre of the stitch, then in the same manner through stitch on second piece.

NOTE – Always keep seam elastic – there should be as much stretch in your seam as there is in the rest of your knitting.

CONTACT US

4 Lansell Street, Bendigo, VIC 3550

T +61 3 5442 4673

E enquiries@ausyarnco.com.au

A.B.N 43 006 285 169

patonsyarns.com.au [f/ausyarnco](https://www.facebook.com/ausyarnco) [@ausyarnco](https://www.instagram.com/ausyarnco)