

YARN = Poema by Laines du Nord: Color 220: 2 balls

**I** CIRCULAR NEEDLES = 3,5 and 4 mm (cables 100 cm and 60 cm for sleeves)

OTHER = stitch markers, tapestry needle.

**CIRCULAR NEEDLES = 3,5 and 4 mm** ( cables 100 cm and 60 cm for sleeves)

**OTHER** = stitch markers, tapestry needle.



This tee is worked in the round from the top down, with circular yoke.

## SAMPLE

24 stitches and 30 rows = 10 X10 cm in stocking st. with needles **4 mm**. Adjust the needles size if it's needed to achieve the correct gauge.

## POINTS USED

### **Stocking stitch;**

**1/1 rib st: All rounds:** \*K2, P2 \* rep \*\* to the end.

## ABBREVIATIONS

**st(s)**= stitch(es);

**SM**= stitch marker;

**SMB**= stitch marker of the beginning of the round;

**sSM**= slip SM;

**K** = knit;

**P** = purl;

**RS** = right side;

**WS** =wrong side;

**K2tog** = knit 2 sts together;

**SKP**= slip 1, K1, pass slipped stitch over;

**YO** = yarn over

**m1** = make one by picking up one a loop between two stitches and knitting into the back of the new stitch.

**rep \*\***= repeat from \* to \*

## MEASURES

### SIZES - S (M,L)

#### MEASURES OF THE FINISHED GARMENT:

##### Size S

Bust circumference: 91 cm

##### Size in photos: M

Bust circumference: 100 cm

##### Size L

Bust circumference: 110 cm

#### ARM CIRCUMFERENCE

**Size S:** 31 cm

**Size L:** 33 cm

**Size M:** 37 cm

## PROCEDURE

### YOKE

With **needles 3,5mm** cast on 104 (108, 114) 1 sts, insert the marker to mark beginning of row, **SMB**, and start to work in the round ensuring that the work is not twisted (to join in the round: Ktog the first and the last cast-on stitch). [= 104 (108, 114) sts]

**Rounds 1 - 10:** \* K1, P1 \* rep\*\* to the end.

**Change to needles 4 mm**

**Rounds 11 - 13:** K all sts

**Round 14:** K and increase evenly 28 (36, 42) sts (= m1). [ 132 ( 144, 156 ) sts]

**Rounds 15 -16:** K all sts

**Rounds 17 - 24:** follow **CHART A** from right to left

**Rou**

**nds 25 - 27:** K all sts

**Round 28:** K and increase evenly 48 (48, 52) sts (m1) [ 180 (192, 208 ) sts]

**Rounds 29 - 31:** K all sts

**Round 32:** P all sts

**Round 33:** \* K2tog, YO \* rep\*\* to the end

**Round 34:** P all sts

**Rounds 35 - 38:** K all sts

**Round 39:** K and increase evenly 48 (48, 44) sts (m1) [ 228 ( 240, 252 ) sts]

**Rounds 40 - 42:** K all sts

**Rounds 43 - 50:** follow **CHART A** from right to left

**Rounds 51 - 53:** K all sts

**Round 54:** \* K3, m1 \*. [ 304 ( 320, 336) sts]

**Rounds 55 - 68:** K all sts

**Rounds 69:** K and increase evenly 64 ( 80 , 104 ) sts (m1)[ 368 ( 400, 440) sts]

**Rounds 70 - 77 :** K all sts

**Only size L:** K 5 rounds

**Place the sts for each sleeve onto holder or scrap yarn:**

Place the first 74 (80, 88) sts onto holder or scrap yarn (first sleeve), K 110 (120, 132) (front), place 74 (80, 88) sts onto holder or scrap yarn (second sleeve), K 110 (120, 132) (back).

Body sts: 220 (240, 264)

### **Body**

**Round 1:** K 110 (120, 132), SM (side), K 110 (120, 132).

**Decrease round:** K2tog, K to 3 sts before SM, SKP, K1, sSM, K2tog, K to 3 sts before end, SKP, K1.

**K** 12 rounds

**Decrease round:** K2tog, K to 3 sts before SM, SKP, K1, sSM, K2tog, K to 3 sts before end, SKP, K1.

**K** 12 rounds

**Decrease round:** K2tog, K to 3 sts before SM, SKP, K1, sSM, K2tog, K to 3 sts before end, SKP, K1.

**K** 40 (42, 46) rounds

### **Hem**

**Round 1:** P

**Round 2:** \* K2tog, YO \* rep\*\* to the end

**Round 3:** P

**Rounds 4,5,6 :** K

**Repeat from Row 1 to Row 6 one more time**

**Change to needles 3.5 mm**

**Work 10 rounds 1/1 rib st:** \* K1, P1 \* rep\*\* to the end.

Cast off all sts

### **SLEEVES**

Slip the **74 (80, 88)** held **stitches** from holder to **4 mm needles**. Place the **SM** in the

center of the underarm sts and start working in the round. [74 (80, 88) sts ]

**Round 1:** P

**Round 2:** \* K2tog, YO \* rep\*\* to the end

**Round 3:** P

**K** 54 ( 54, 56 ) rounds

**Work 6 rounds in 1/1 rib sr:** \* K1, P1 \* rep\*\* to the end

Loosely cast off.

MAKE THE SECOND SLEEVE.

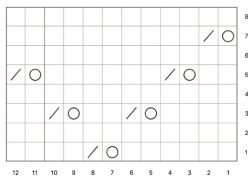
Weave in all ends. Wash and block garment carefully.

## PHOTOGALLERY





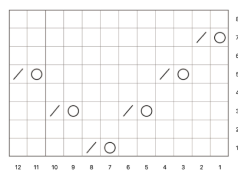
SCHEMA A



LEGENDA



CHART A



KEY

