

HANNAH



Extremely warm and light, the Mohair and silk fibers of our Eiffel yarn are knit together to create an interesting and unique garment.



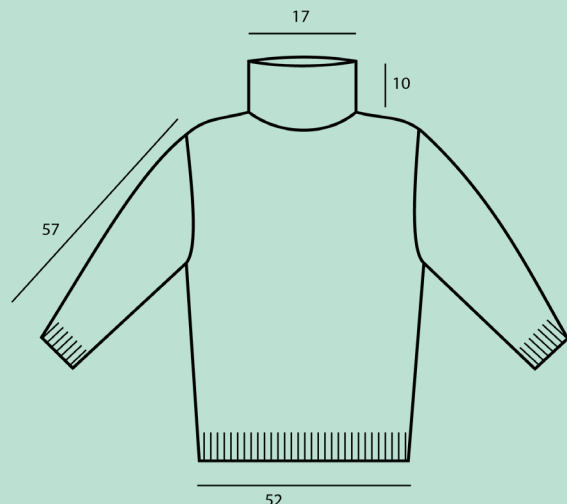
Yarn: EIFFEL col. 2537 turquoise

Needles: n. 5,5

Weight: 235 g/ 8,29 oz. (10 balls)

Size: M

Stitches used: Tubular, 2x2 Rib, Vienna Straw Stitch, Stockinette Stitch



Explanation Vienna Straw Stitch:

Work over a multiple of 4 + 2 stitches.

1st row: knit1, *yo1, knit1, yo1, s2kp (= slip2, knit1, pass slipped stitch over)*, finish with knit1.

2nd – 4th row: purl.

3rd row: knit1, *s2kp, yo1, knit1, yo1*, finish with knit1.

5th row: repeat from the 1st row.

HANNAH



Gauge: 10 cm x 10 cm (4 inc. x 4 inc.): 16 stitches and 18 rows.

Size M:

for each bigger or smaller size calculate in width 2 cm (0,75 in.) more or less, in our gauge it corresponds to 3 stitches; calculate in height 2 cm (0,75 in.) more or less, in our gauge it corresponds to 4 rows.

KNITTING THE BACK

Using needle n. 5,5 and col. turquoise, cast on 86 stitches and work in **Tubular** for 2 rows, then continue in **2x2 Rib** for 16 rows.

Start working in **Vienna Straw Stitch** with the same numbers of stitches.

At a total height of 34 cm (13,38 in.), to delimit the armhole, start working the first and last 4 stitches in **Stockinette Stitch**.

At a total height of 53 cm (20,86 in.), make 4 rows in

Stockinette Stitch, then bind off all stitches.

KNITTING THE FRONT

Work as for the back, up to a total height of 47 cm (18,50 in.).

Then, for the neckline, bind off the 20 central stitches and continue the two parts separately, binding off at neck's sides 1 stitch every 2 rows twice.

At a total height of 53 cm (20,86 in.), make 4 rows in **Stockinette Stitch**, then bind off the stitches of every shoulder.

KNITTING THE SLEEVES

Using needle n. 5,5 and col. turquoise, cast on 40 stitches and work in **Tubular** for 2 rows, then continue in **2x2 Rib** for 12 rows.

Start working in **Vienna Straw Stitch** with the same numbers of stitches.

At a total height of 8 cm (3,15 in.) start increasing at



HANNAH



sides 1 stitch every 4 rows 8 times, and 1 stitch every 6 rows twice. On the new stitches work always in **Stockinette Stitch**.

At a total height of 57 cm (22,44 in.), bind off all stitches.

Make the second sleeve as the first one.

FINISHING

Sew a shoulder. For the neck, pick up stitches of front and back neckline; work in **2x2 Rib** for 18 rows, then in **Tubular** for 2 rows and bind off in **Tubular** with a needle.

Sew the other shoulder, sides, underarms and apply the sleeves.

