



# NORO KUREYON THE 30TH ANNIVERSARY COLLECTION

CABLE NEWS

Cables that divide and interlace against a striped backdrop decrease in the round and culminate with a joyful burst of a pompom.

## Skill Level



## Finished Measurements

**Circumference** 20in/51cm.

**Height** 11in/28cm.

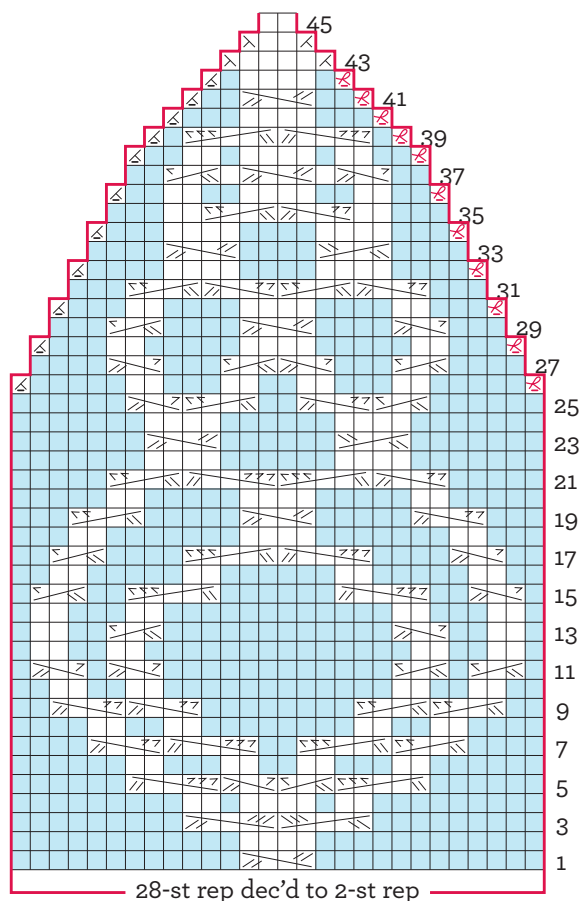
## Materials

- 2 x 50g skeins of Noro Kureyon in #359.
- One size US 8 (5mm) circular needle, 16in/40cm long.
- One size US 9 (5.5mm) circular needle, 16in/40cm long, or size to obtain gauge.
- One set (5) size US 9 (5.5mm) double-pointed needles.
- 4 stitch markers, 1 in a different color for beginning of round.
- Cable needle.
- One large pompom maker.

## Gauge

23½ sts and 24 rows to 4in/10cm over cable pattern using larger needle.

TAKE TIME TO CHECK GAUGE.



## Abbreviations

**beg** begin(ning); **cn** cable needle; **k** knit; **p** purl; **pm** place marker; **rep** repeat(s)(ing)(ed); **rnd(s)** round(s); **sl** slip; **st(s)** stitch(es); **tbl** through back loop(s); **tog** together

## Stitch Glossary

**3-st RPC** Sl 1 st to cn and hold to back, k2, p1 from cn.

**3-st LPC** Sl 2 sts to cn and hold to front, p1, k2 from cn.

**4-st RC** Sl 2 sts to cn and hold to back, k2, k2 from cn.

**4-st LC** Sl 2 sts to cn and hold to front, k2, k2 from cn.

**4-st RPC** Sl 2 sts to cn and hold to back, k2, p2 from cn.

**4-st LPC** Sl 2 sts to cn and hold to front, p2, k2 from cn.

**5-st RC** Sl 3 sts to cn and hold to back, k2, k3 from cn.

**5-st LC** Sl 2 sts to cn and hold to front, k3, k2 from cn.

**5-st RPC** Sl 3 sts to cn and hold to back, k2, p3 from cn.

**5-st LPC** Sl 2 sts to cn and hold to front, p3, k2 from cn.

**ssk (slip, slip, knit)** Slip next two sts knitwise, one at a time, to RH needle. Insert tip of LH needle into fronts of these sts, from left to right. Knit them together. One st has been decreased.

## Hat

With smaller circular needle, cast on 100 sts. Join to work in rnds, taking care not to twist sts on needle, and pm to mark beg of rnd.

**Rnd 1** \*K2, p2; rep from \* around.

Rep rnd 1 for k2, p2 rib until piece measures 3½in/9cm from beg, increasing 12 sts evenly around on last rnd—112 sts.

Change to larger circular needle.

## Begin chart

**Note** Change to double-pointed needles, dividing sts evenly over 4 needles, when there are too few sts to fit comfortably on circular needle.

**Set-up rnd** \*Work rnd 1 of chart over 28 sts, pm; rep from \* twice more, then work chart over remaining 28 sts.

Work rnds 2–45 of chart—8 sts.

Cut yarn, leaving a long end. Pull tail through sts on needles and draw up tightly to close.

## Finishing

Weave in ends. Block to measurements.

Make pompom and secure to top of hat. ❖

□ k	⊠ ssk	⊠ 4-st RC	⊠ 5-st RC
■ p	⊠ k2tog	⊠ 4-st LC	⊠ 5-st LC
⊠ p2tog	⊠ 3-st RPC	⊠ 4-st RPC	⊠ 5-st RPC
⊠ p2tog tbl	⊠ 3-st LPC	⊠ 4-st LPC	⊠ 5-st LPC